

# Gold Series 6G





The story of Monitor Audio's Gold Series reaches back 36 years. At this level there is no more accomplished combination of speaker design, engineering and truly enjoyable acoustic performance.





A Contemporary Classic.



# Gold in every sense of the word.

The all-new, totally redesigned Gold Series 6G leaves no detail unrevealed, as Monitor Audio Group delivers the finest, most exhilarating loudspeaker range yet to bear the Gold Series name.

Gold Series 6G comprises six highly distinctive models. Each meets a defined user requirement, adds innovative acoustic technologies, and is crafted to celebrate and exude the distinctiveness and quality that customers expect from the Gold Series

Building on over three decades of heritage, Gold Series 6G represents the start of an epic new chapter; a new way to experience the joy of sensational sound.

Listen Again.





# Precious Metal.

Exquisitely detailed, expertly crafted; Gold Series 6G exemplifies the combination of high-performance and highly considered design that is the very embodiment of the Gold Series' 36-year heritage.

Today's Gold Series 6G is the purest representation of audio performance and technical innovation yet. Whether you love music, movies or both, the new Gold Series 6G is engineered to deliver a joyful listening experience.

The ultimate Gold Series 6G.







Pictured: Gold 50 6G in Satin White



# Acoustic innovation – the power to exhilarate

## 1 New HDT, C-CAM cone

Taking a cue from the honeycomb structure of the RDT III cone technology from Hyphn/Platinum Series, the new HDT cone uses a hexagonal pattern to disrupt symmetries in the cone breakup to shift its frequency up by 10% compared to RST II.

## 3 New 6-inch bass-mid driver (Gold 50 & On-Wall models only)

With the new HDT, C-CAM cone, and FEA-optimised surround design, an inverted build ring, and a copper cap, the usable frequency range of the new Gold 6G 6-inch bass-mid driver has been greatly increased, reducing distortion in the midrange for improved clarity in two-way systems.

## 5 New aluminium mid-pod

The Gold Series 6G transducer and mid-driver sits within a dedicated, and carefully designed steel encased 'mid-pod'. This enclosure ensures optimum acoustic performance without compromising the cabinet volume required for the bass drivers.

## 7 Cabinet design

A top trim detail on the 100 6G and 500 6G models allows the MPD III to be placed higher up the cabinet, optimising the cabinet edge diffraction on these larger models. This helps deliver consistent and precise imaging across the entire frequency range.

## 2 New 6- and 8-inch bass drivers

With the new HDT, C-CAM cone, FEA-optimised surround and spider designs, plus increased voice coil length, the new Gold Series 6G's 6- and 8-inch bass drivers exhibit greater linearity, reducing distortion in the bass for cleaner and punchier low end.

## 4 New 3-inch mid-frequency driver

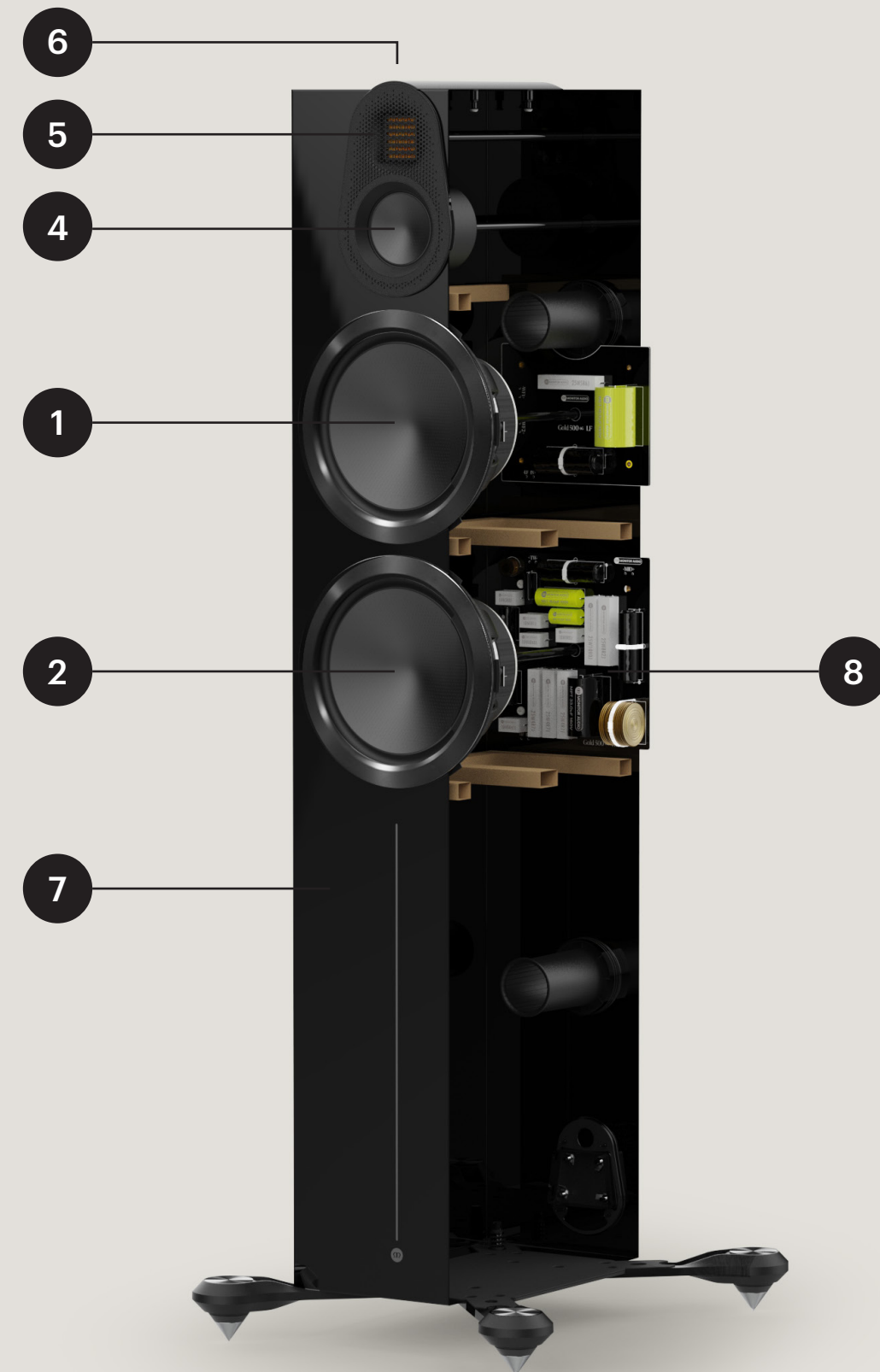
Utilising a high-strength motor unit with a neodymium bucking magnet, a regressive spider design, and increased voice coil venting, the new Gold Series 6G's 3-inch mid-frequency driver exhibits lower distortion and improved sensitivity, frequency response, and directivity.

## 6 New MPD III high-frequency transducer

Based on the MPD III from Hyphn/Platinum Series, the Gold Series 6G's MPD III has been carefully optimised to work in harmony with the driver system. Freedom from physical constraints as seen in the Hyphn's M-Array has allowed for further optimisation for use in two-way systems.

## 8 New crossover design

Delivering on Monitor Audio's Transparent Design Philosophy, the Gold Series 6G's crossovers have been optimised for in-room performance; this is particularly important for the new On-Wall product, where typical usage is closer to Custom Install than traditional HiFi.





# Light, strong, powerful – the perfect piston.

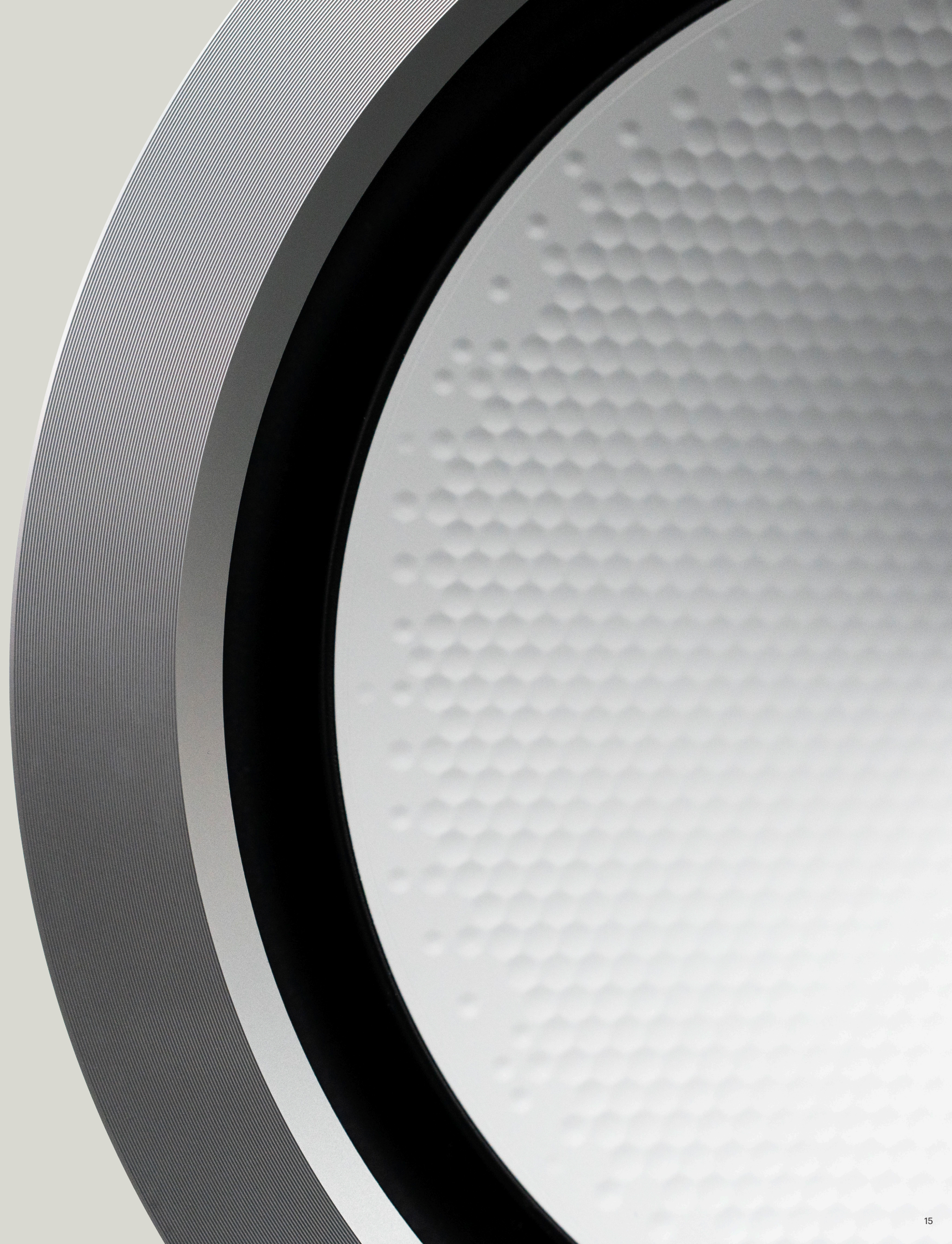
## **New HDT, C-CAM cone**

Monitor Audio has been leading the industry in the field of metal driver cone technology for over 40 years. So, it's no surprise that the new Gold Series 6G pushes the boundaries once again, with a totally new metal cone technology in the form of HDT (Hexagonal Diaphragm Technology).

HDT draws on the design of the RDT III cones utilised in Hyphn and the Platinum Series, which consist of a Nomex honeycomb layer sandwiched between aluminium and carbon fibre skins. The new HDT cone employs a hexagonal pattern to disrupt symmetries in the cone breakup, which shifts the frequency up by 10% compared to the RST II cones on the Silver Series 7G.

The use of C-CAM over standard aluminium also results in a stronger, more fatigue-resistant cone. This means that Gold Series 6G drivers perform exactly as Monitor Audio's engineers intended for as long as you live with the speakers – dynamic passages are delivered with exceptional precision, offering true high-fidelity playback.

All of this means that the new HDT, C-CAM cones are among the strongest, most piston-like C-CAM cones Monitor Audio has ever engineered.





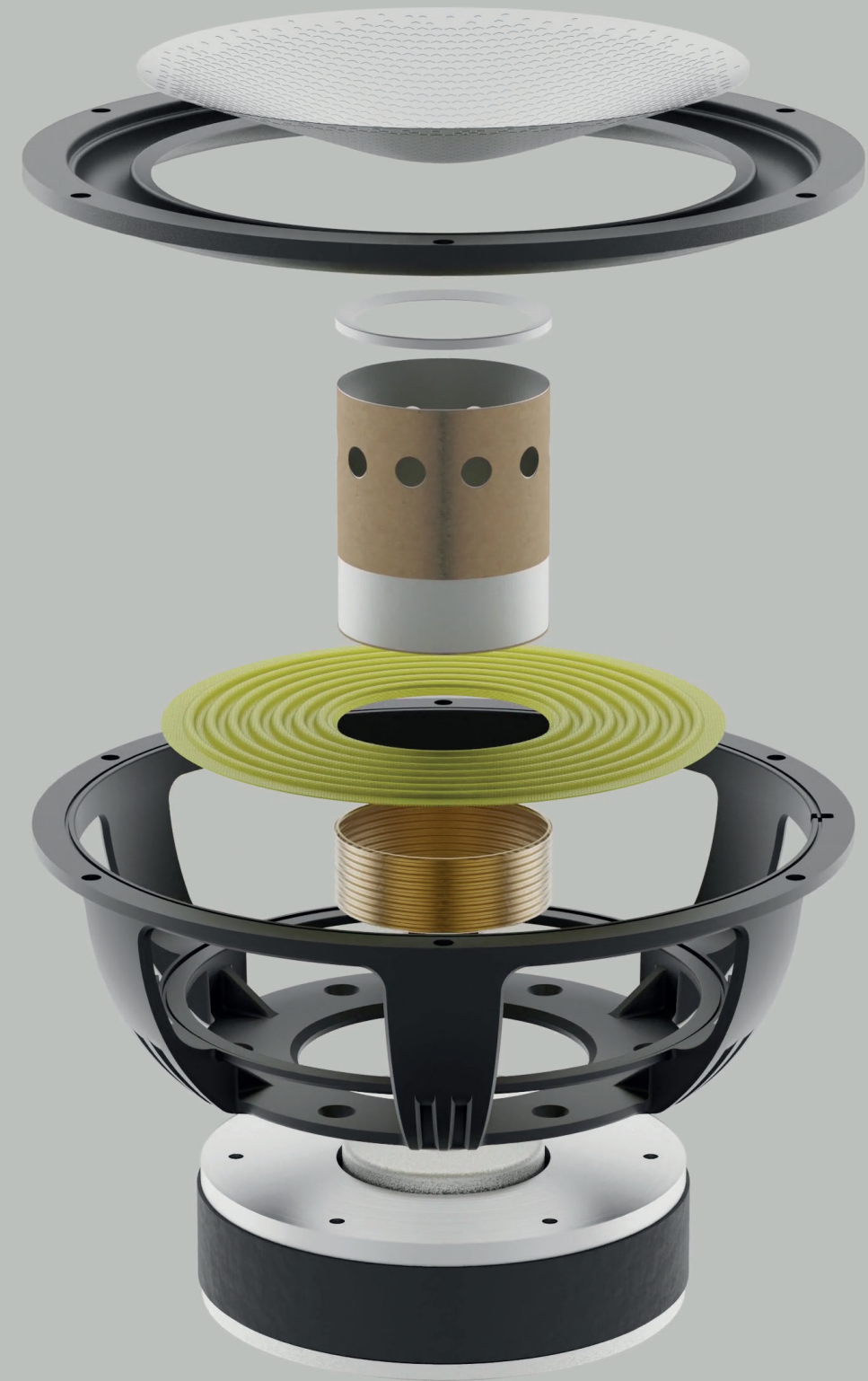
# Impactful, dynamic and controlled bass.

## New 6- and 8-inch bass drivers

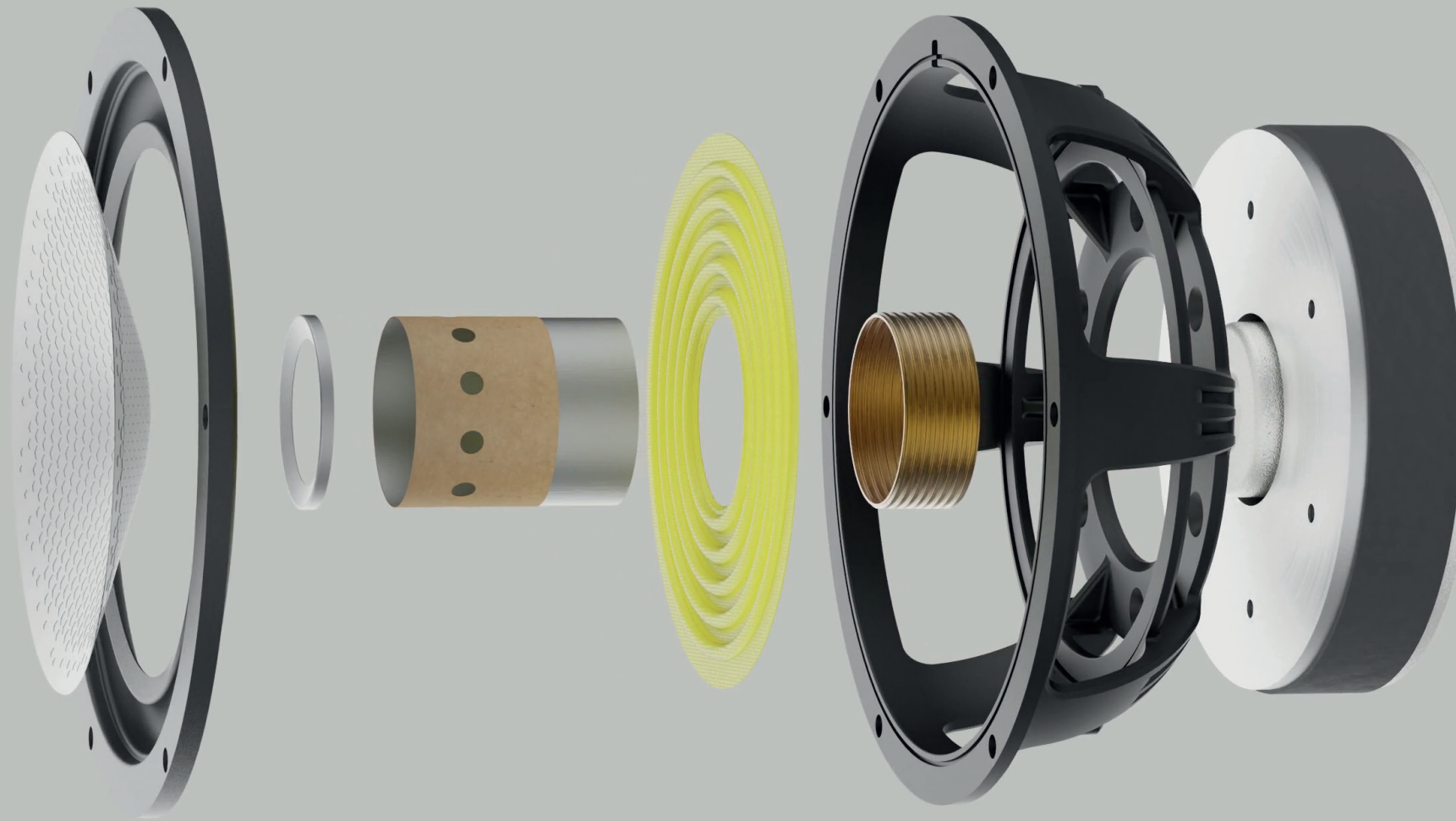
With the new HDT, C-CAM cone, FEA-optimised surround and spider designs, plus increased voice coil length, the new Gold Series 6G's 6- and 8-inch bass drivers exhibit greater linearity, reducing distortion for cleaner and punchier low end. Rigidly secured in place by a new cast aluminium, light-weight chassis design, it provides the optimum structure with maximum airflow around the drive unit.

'Through-bolted' to the rear of the cabinet for improved strength of the overall 'system', Gold Series 6G drive units produce masses of dynamic bass with low distortion and total control.

- New HDT, C-CAM cone helps disrupt symmetries in the cone breakup to shift its frequency up by 10% over an RST II cone – allowing bass to be presented with total control and precision
- FEA designed cone surround and new spider design reduces cone breakup
- Large, powerful motor system for improved power, dynamics and greater pistonic movement







## A seamless, high-fidelity presentation

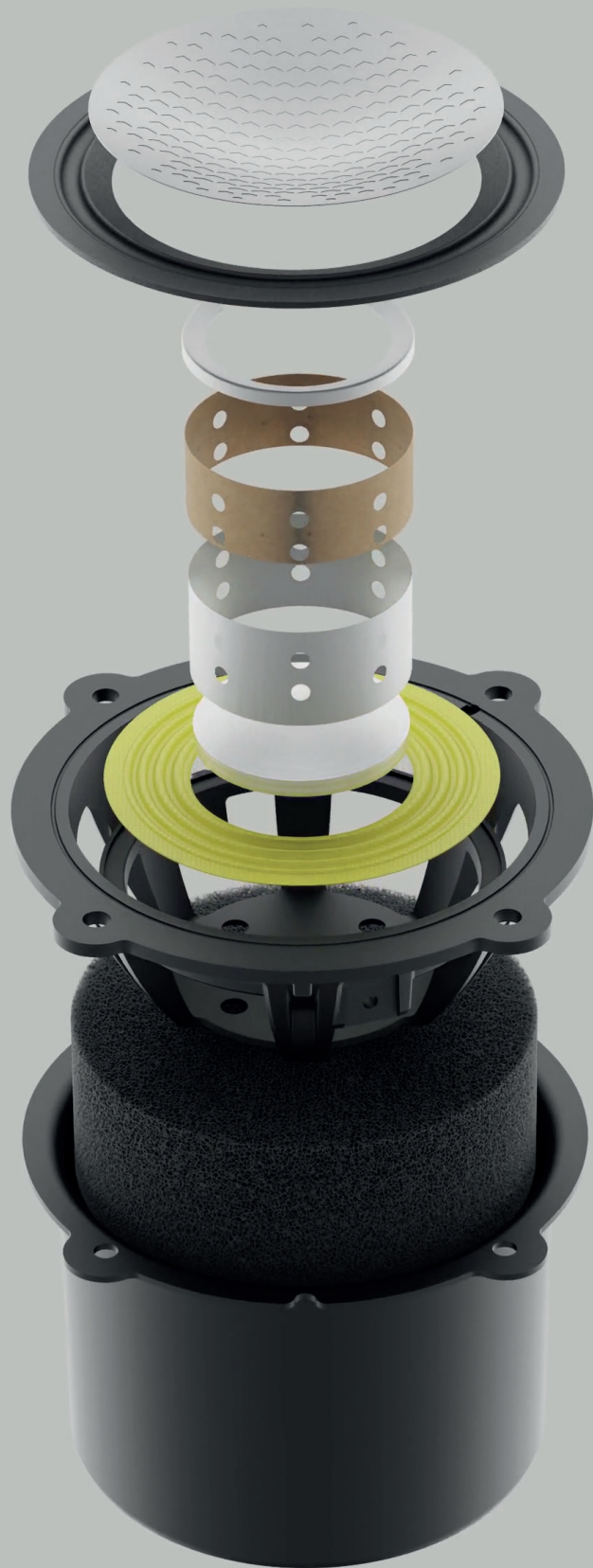
**New 6-inch bass-mid driver**  
(featured on: Gold 50 and Gold On-Wall models)

The new HDT, C-CAM cone, coupled with an FEA-optimised surround design, an inverted build ring, and a copper cap, combine to ensure the usable frequency range of the new Gold Series 6G's 6-inch bass-mid driver has been greatly increased, reducing mid-frequency distortion for improved clarity in two-way systems.

The result is a seamless link from low bass through the frequency range to mid and upper frequencies. This allows the driver to blend smoothly with the MPD III high-frequency transducer for a beautiful high-fidelity presentation that reveals all the detail or excitement of a recording.

- New HDT, C-CAM cone helps disrupt symmetries in the cone breakup to shift its frequency up by 10% over an RST II cone – allowing bass to be presented with total control and precision
- Inverted build ring and copper cap extends the passband, reduces distortion and provides extra mid-frequency clarity and detail
- FEA designed cone surround and spider designs reduce cone breakup
- Large, powerful motor system for improved power, dynamics and greater piston movement





## Compact, controlled and crystal clear.

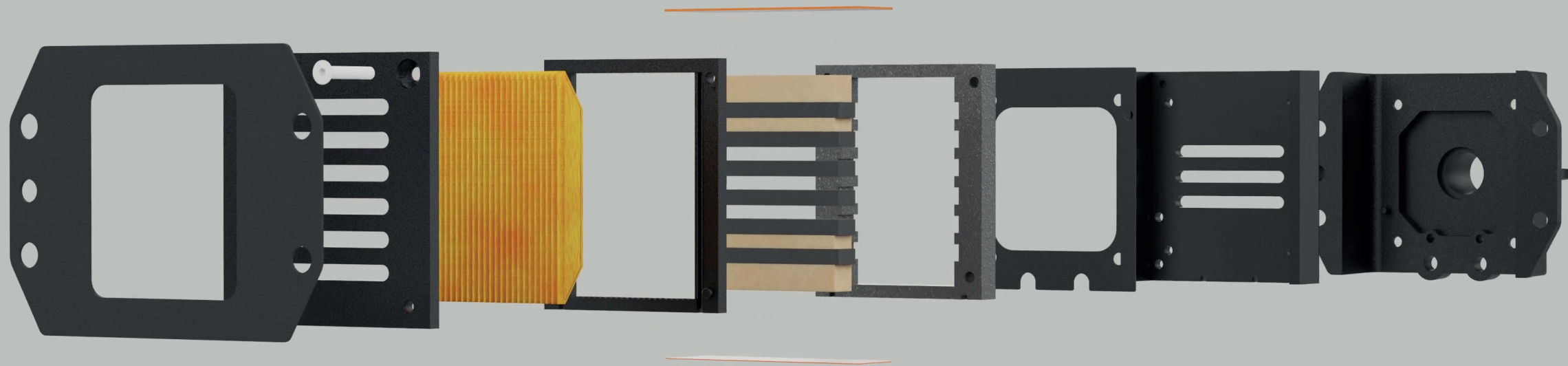
### New 3-inch mid-driver

Gold Series 6G features a totally new 3-inch mid-driver. The philosophy and engineering science of smaller MF drivers, is simply that they offer far wider levels of directivity for imaging and presentation, and that they don't need to go lower than 500Hz.

Being smaller in diameter means the cone break-up occurs well above the upper crossover frequency, eliminating any distortion this would create and providing a smooth transition to the MPD III high-frequency transducer. Furthermore, this new driver is housed within a dedicated steel enclosure, providing the exact volume required for optimum performance without compromising the cabinet volume needed for bass response. This approach ensures there's no interference between the two, for a cleaner more precise and detailed presentation.

- High-strength neodymium bucking magnet for higher power handling and greater control
- Increased voice coil venting improves sensitivity
- Optimised surround design aids higher-excursion for greater pistonic performance





## The finest details, delivered.

Range topping Hyphn technology: the MPD III high-frequency transducer

The result of an extensive development process to refine and achieve even greater performance, the latest generation of Monitor Audio's MPD III (Micro Pleated Diaphragm) transducer delivers precise high-frequency sound with greater consistency, clarity and accuracy. The detail achieved makes music sound lifelike, crisp and real. Fine-tuned for effortless musicality.

- The revised transducer design for the Gold Series 6G is heavily influenced by the transducer used in Hyphn and the Platinum Series
- Micro Pleated Diaphragm (MPD) extends tweeter passband to >60 kHz (compared to >40 kHz for a typical AMT)
- Square radiating area ensures equal directivity in horizontal and vertical planes, resulting in an improved soundstage
- Optimised rear volume to ensure minimal ripple in audible frequency range
- Optimised waveguide to give controlled directivity and radiation impedance matching, further improving soundstage and maximising sensitivity

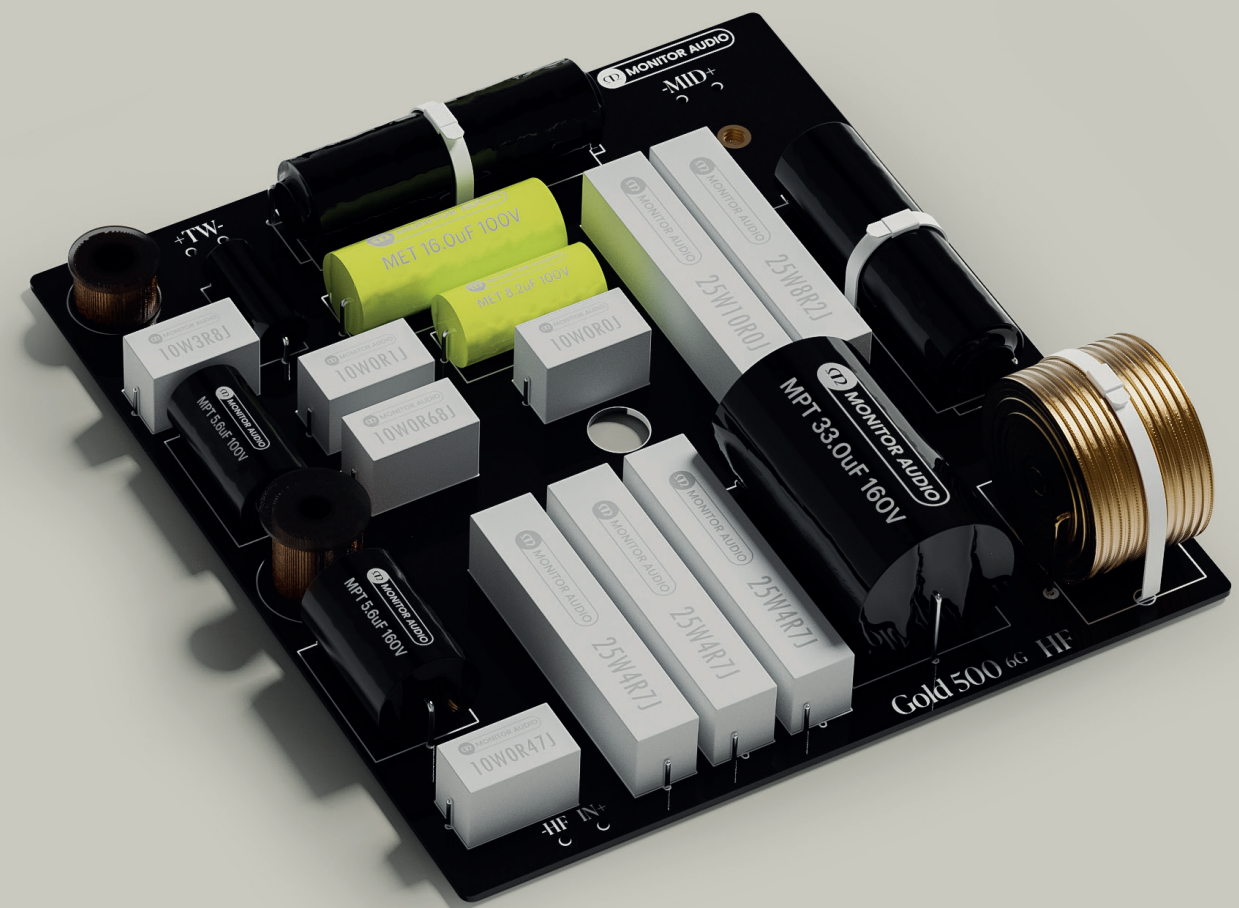
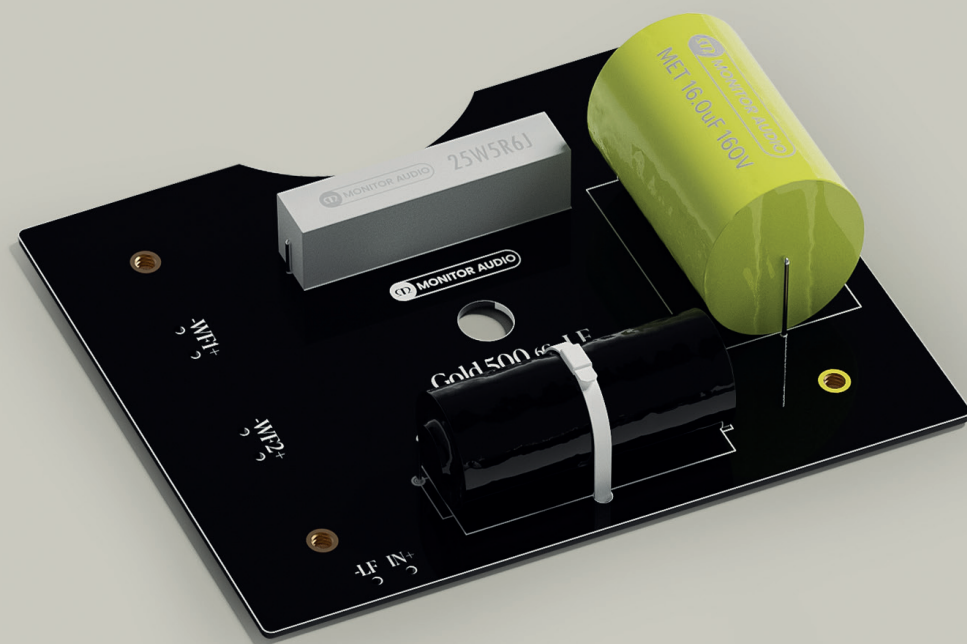


# Crossover Design – the purest of signals.

Gold Series 6G crossover design

Gold Series 6G's crossovers have been developed using high-quality capacitors and have undergone hundreds of hours of listening by Monitor Audio's acoustics team. Many iterations have been repeatedly tested to ensure the smoothest, cleanest audio signal is delivered to each drive unit.

Gold Series 6G crossovers have been optimised to deliver the purity of sound and performance that you'd normally expect from speakers costing two or three times as much.





# As beautifully finished as luxury furniture.

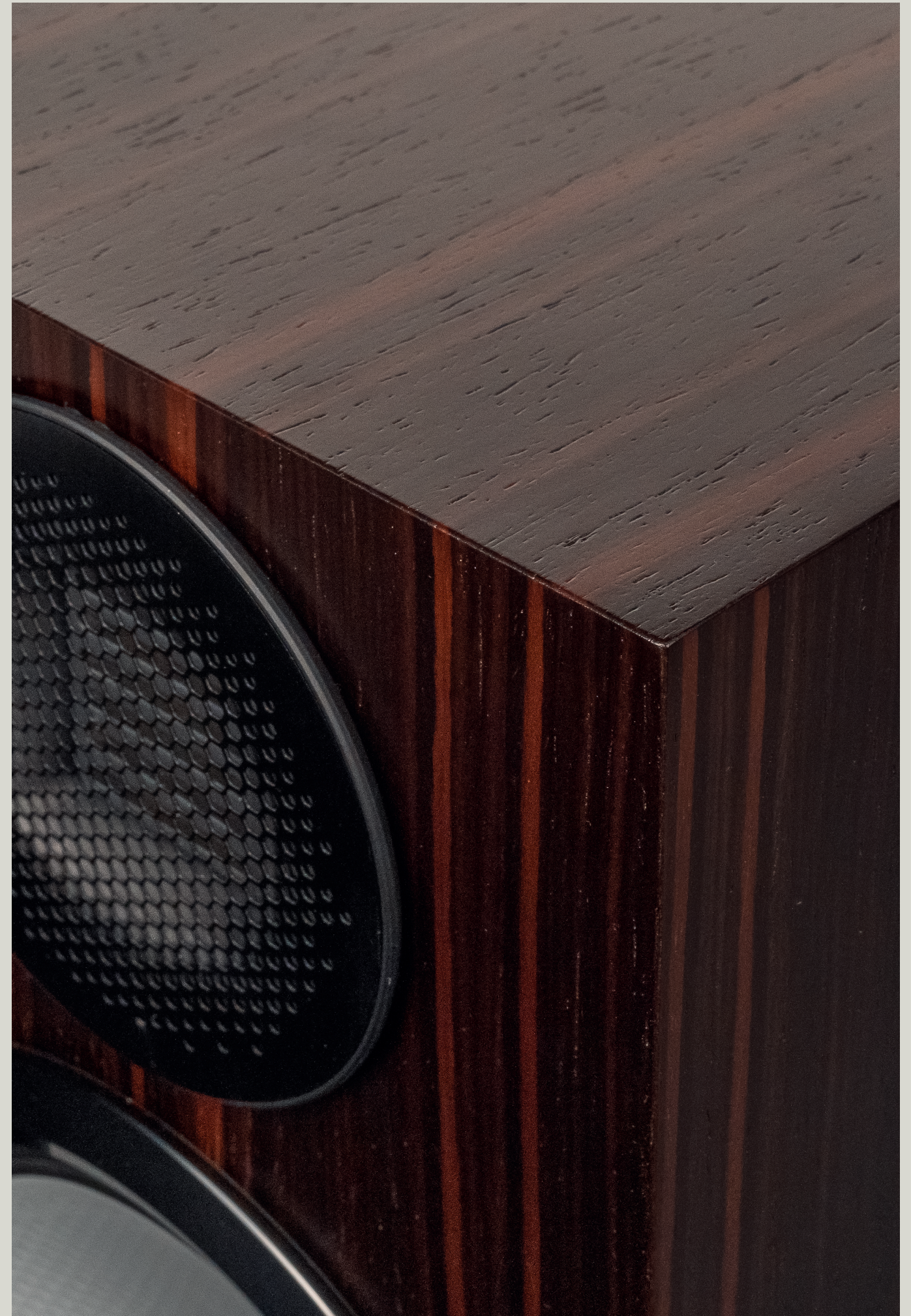
## Gold Series 6G cabinet construction

All Gold Series 6G's cabinets are designed to form the most rigid structure possible, which allows the drivers to perform to their optimum capabilities. Coupled with cleverly calculated geometry, advanced bracing techniques and technically accurate crossovers, the cabinets are an important element of the total system under Monitor Audio's Transparent Design Philosophy.

Completed in beautiful, contemporary high-gloss, painted and veneered finishes, Gold Series 6G exudes a quality that continues to ensure Monitor Audio retains its reputation as a world leader in speaker cabinet design.

The quality of Gold Series 6G will last a lifetime, just as a beautiful piece of luxury furniture would.

- Delivering more sustainability: The Macassar wood veneer introduced on Gold Series 6G is man-made, with a quality and lustre that exudes real ebony. Using it offers a significant reduction compared to the carbon impact of traditional methods of real-wood veneered production







Pictured: Gold On-Wall 6G in High-Gloss Black



# Gold 500 6G

## Flagship three-way floorstanding speaker

The Gold 500 6G is the flagship model of the new Gold Series 6G. It represents the highest-levels of performance and system design at the price point, and within this competitive market segment. Designed to house the latest MPD III high-frequency transducer alongside the new 3-inch mid-driver and powerful twin 8-inch bass drivers, each of which benefit from the latest HDT, C-CAM cone technology and hugely powerful motor systems. The Gold 500 6G is a worthy flagship for such a prestigious range; a formidable acoustic treat for the ears as well as the eyes.

### Features at a glance:

- Three-way design
- 1 x MPD III high-frequency transducer
- 1 x 3-inch mid-driver featuring HDT, C-CAM cone technology
- Steel mid-pod enclosure with die-cast aluminium baffle
- 2 x 8-inch bass drivers featuring HDT, C-CAM cone technology
- New crossover design utilising carefully selected high-quality capacitors
- Ported cabinet design using HiVe II port technology and through-bolt technology
- All-new cast aluminium outriggers and plinth/spike assembly featuring a new steel plate for greater structural integrity and improved stability
- Finishes available: Macassar Wood Veneer, High-Gloss Black and Satin White
- Individual driver 'Magnetic grilles' included





# Gold 300 6G

## Mid-sized three-way floorstanding speaker

The Gold 300 6G is the mid-sized floorstanding speaker within the Gold Series 6G. It boasts a smaller footprint and slimmer profile compared to the 500 6G and offers outstanding levels of performance and system design at its price. Designed to house the latest MPD III high-frequency transducer alongside the new 3-inch mid-driver and powerful twin 6-inch bass drivers, each of which benefit from the latest HDT, C-CAM cone technology and hugely powerful motor systems. The Gold 300 6G delivers music and movie scores with pure, detailed high-fidelity sound.

### Features at a glance:

- Three-way design
- 1 x MPD III high frequency transducer
- 1 x 3-inch mid-driver featuring HDT, C-CAM cone technology
- Steel mid-pod enclosure with die-cast aluminium baffle
- 2 x 6-inch bass drivers featuring HDT, C-CAM cone technology
- New crossover design utilising carefully selected high-quality capacitors
- Ported cabinet design using HiVe II port technology and through-bolt technology
- All-new cast aluminium outriggers and plinth/spike assembly featuring a new steel plate for greater structural integrity and improved stability
- Finishes available: Macassar Wood Veneer, High-Gloss Black and Satin White
- Individual driver 'Magnetic grilles' included





# Gold 100 6G

## Large three-way stand-mount speaker

The Gold 100 6G is a substantial stand-mount speaker. A powerful performer, it creates an astonishing soundstage, is capable of deep extended bass and beautifully lifelike MF/HF definition. Its design features the latest MPD III high-frequency transducer, the new 3-inch mid-driver and a powerful 8-inch bass driver, both of which benefit from the latest HDT, C-CAM cone technology and hugely powerful motor systems. The Gold 100 6G delivers outstanding levels of high-fidelity sound with consummate ease.

### Features at a glance:

- Three-way design
- 1 x MPD III high-frequency transducer
- 1 x 3-inch mid-driver featuring HDT, C-CAM cone technology
- Steel mid-pod enclosure with die-cast aluminium baffle
- 1 x 8-inch bass driver featuring HDT, C-CAM cone technology
- New crossover design utilising carefully selected high-quality capacitors
- Ported cabinet design using HiVe II port technology and through-bolt technology
- Compatible with the ST-2 speaker stand
- Finishes available: Macassar Wood Veneer, High-Gloss Black and Satin White
- Individual driver 'Magnetic grilles' included







Pictured: Gold 100 6G in Macassar on an ST-2 Universal Stand in Black



# Gold 50 6G

## Compact two-way bookshelf speaker

The Gold 50 6G is a compact, high-fidelity bookshelf speaker. Its discreet proportions, plus the ability to partner it with the ST-2 speaker stand, make it the most flexible of all the Gold Series 6G models when it comes to placement in a listening environment. Designed to house the latest MPD III high-frequency transducer and a powerful 6-inch mid-bass driver, both of which benefit from the new HDT, C-CAM cone technology and hugely powerful motor systems. The Gold 50 6G is a joy, delivering purity, precision, and a never less than compelling listen.

### Features at a glance:

- Two-way design
- 1 x MPD III high-frequency transducer
- 1 x 6-inch bass-mid driver, featuring HDT, C-CAM cone technology
- Machined aluminium drive unit trims
- New crossover design utilising carefully selected high-quality capacitors
- Ported cabinet design using HiVe II port technology and through-bolt technology
- Compatible with the ST-2 speaker stand
- Finishes available: Macassar Wood Veneer, High-Gloss Black and Satin White
- Individual driver 'Magnetic grilles' included





# Gold On-Wall 6G

## Mid-sized two-way on-wall speaker

The Gold On-Wall 6G is a new, highly flexible addition to the Gold Series 6G range. Not only does its slim profile allow it to be a fantastic rear and side channel AV speaker, but it also means that it is perfect for wall-mounted front LCR (left-centre-right) applications – making it an ideal home cinema speaker. It features the latest MPD III high-frequency transducer and a powerful 6-inch mid-bass driver, benefiting from the latest HDT C-CAM cone technology and powerful motor systems. The Gold On-Wall 6G is a highly versatile, décor-friendly alternative, delivering detailed high-fidelity surround sound in abundance.

### Features at a glance:

- Two-way Design
- 1 x MPD III high frequency transducer
- 1 x 6-inch bass-mid drivers featuring HDT, C-CAM cone technology
- Machined aluminium drive unit trims
- New crossover design utilising carefully selected high-quality capacitors
- Ported cabinet design using HiVe II slot-port technology and through-bolt technology
- Features integrated wall mounting fixings and custom terminal panel for flush fitment on a wall
- Finishes available: Macassar Wood Veneer, High-Gloss Black and Satin White
- 'Magnetic grilles' included





# Gold C250 6G

## Mid-sized three-way centre speaker

The Gold C250 6G is the ideal centre-speaker for customers looking to create an incredible home cinema. A compact centre-channel speaker, its three-way design features powerful twin 6-inch bass drivers benefiting from the latest HDT, C-CAM cone and powerful motor systems, the latest MPD III high-frequency transducer, plus a 3-inch mid-driver that ensures vocals and dynamic passages within movie scores or soundtracks are delivered with utter realism and detail. Capable of a truly immersive experience when coupled with other Gold Series 6G models, the Gold C250 6G is engineered to sit at the heart of a home cinema system that delivers impact and immersion, propelling the listener to the very centre of the on-screen action.

### Features at a glance:

- Three-way design
- 1 x MPD III high-frequency transducer
- 1 x 3-inch mid-driver featuring HDT, C-CAM cone technology
- Steel mid-pod enclosure with die-cast aluminium baffle
- 2 x 6-inch bass drivers featuring HDT, C-CAM cone technology
- New crossover design utilising carefully selected high-quality capacitors
- Finishes available: Macassar Wood Veneer, Gloss Black and Satin White
- Individual driver 'Magnetic grilles' included





# ST-2 Stand

## Designed for the most optimum listening experience

The ST-2 is engineered to position a variety of stand-mount speakers at the perfect listening height. However, it has been designed to partner the Monitor Audio Gold 100 and Platinum 100 3G models specifically; both are designed to be securely fixed to the ST-2 itself. The ST-2 ensures that your listening experience is presented with complete audio performance in mind: with precision and lifelike clarity.

### Features at a glance:

- ST-2 is designed using Monitor Audio's Transparent Design Philosophy
- Positions your speaker at the ideal height and with perfect stability
- Unique extruded aluminium support column with integrated cable management and internal dampening
- Ballast fillable
- Stable die-cast aluminium base
- Custom adjustable feet suitable for hard or carpeted flooring with discreet height adjustment system
- Choice of a matte black or matte white finish







Pictured: Gold 500 6G, C250 6G & On-Wall 6G in High-Gloss Black with Creator Series Tier 2, C2L In-ceiling speakers



# Flexible system configuration

## Gold Series offers a variety of high-fidelity AV and stereo options

The six, premium Gold Series models provide a user the ability to enjoy a variety of stereo, two-channel and multi-channel home AV cinema system configurations by mixing and matching speakers to suit their chosen application, size of room and budget.

The newest addition to the series, the slim and high-performance Gold On-Wall, increases both stereo and AV options even further. Not only can it be used as a semi-decreet side or rear wall-mounted AV surround speaker, but it's useful on-wall design, and exceptional acoustic performance allows it to be used for configurations to satisfy LCR (Left-Centre-Right channel) options, placed around a TV screen, or as wall-mounted high-performance stereo speakers.

The Gold On-Wall speaker: slim, compact and far more flexible than you might think.





## Machined aluminium driver baffles and trims

### Superior details that accentuate the quality of sound and design

The exquisite quality of the Gold Series 6G is the result of paying close attention to even the smallest details. Carefully conceived and delivered with conviction throughout the design, these details combine to make the whole special. The machined aluminium, anodised driver baffles and trim pieces are precise and clean; the delicate shadow gaps around them a subtle lift to provide an element of sophistication atop the beautifully veneered wooden or painted cabinets.

For those that require a more subtle aesthetic, individual driver grilles add an air of discreet luxury.

Gold Series 6G; distinct and unique.





## Flexible system configuration

### Gold Series offers a variety of high-fidelity AV and stereo options

The six, premium Gold Series models provide a user the ability to enjoy a variety of stereo, two-channel and multi-channel home AV cinema system configurations by mixing and matching speakers to suit their chosen application, size of room and budget.

The newest addition to the series, the slim and high-performance Gold On-Wall, increases both stereo and AV options even further. Not only can it be used as a semi-decreet side or rear wall-mounted AV surround speaker, but it's useful on-wall design, and exceptional acoustic performance allows it to be used for configurations to satisfy LCR (Left-Centre-Right channel) options, placed around a TV screen, or as wall-mounted high-performance stereo speakers.

The Gold On-Wall speaker: slim, compact and far more flexible than you might think.





## Plinth and foot assembly

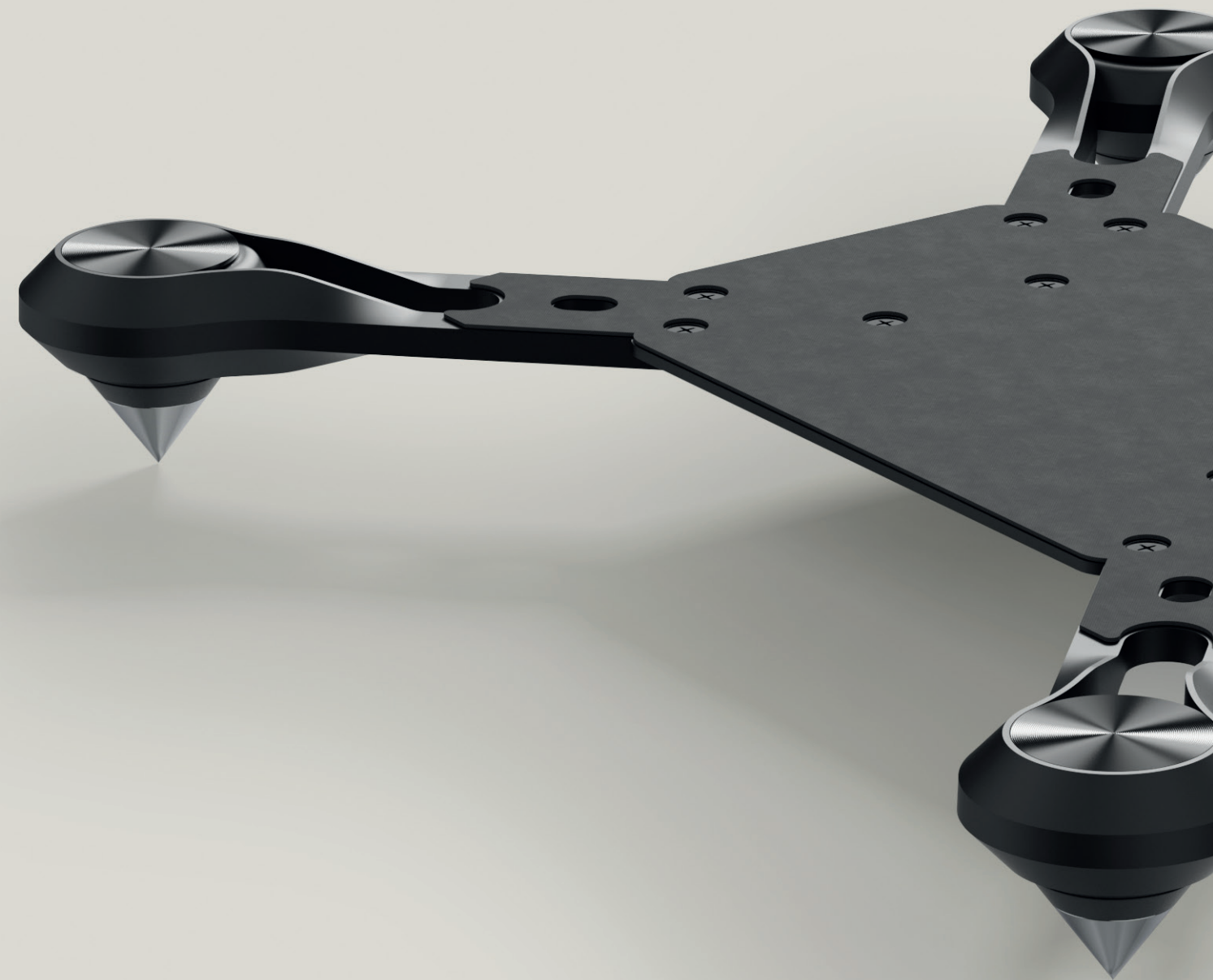
### Positioning for perfection means greater sound performance

Cast aluminium outrigger style assemblies with steel bracing provide the most stable platform possible for the Gold Series 6G floorstanding speakers to perform from, while also allowing users to adjust the speaker level with ease.

A machined magnetic top cap hides the hex key adjustment – and with a simple twist, the height of the spike or rubber foot (depending on the floor surface) can be adjusted to find the perfect level.

The most time consuming and trickiest element will be deciding on the perfect location to place the speakers.

On Gold Series 6G, precision details matter.







Pictured: Gold 300 in Satin White with Roksan Attessa CD Transport & Streaming Amplifier



# Technical specifications



Model	Gold 50 6G	Gold 100 6G	Gold 300 6G
<b>System Format</b>	2-Way	3-Way	3-Way
<b>Sensitivity (2.83v @ 1m, Free-Field)</b>	85 dB	86.5 dB	87 dB
<b>Sensitivity (2.83v @ 1m, Installed)</b>	N/A	N/A	N/A
<b>Recommended Amplifier Power (RMS into 4 Ohm, Music Signal)</b>	130 - 300 W	130 - 500 W	130 - 500 W
<b>Continuous Power Handling (CTA 426-B)</b>	150 W	250 W	250 W
<b>Nominal Impedance</b>	4 Ohms	4 Ohms	4 Ohms
<b>Minimum Impedance (20Hz to 20kHz)</b>	4.0 Ohms @ 225 Hz	3.9 Ohms @ 140 Hz	3.9 Ohms @ 165 Hz
<b>Drive Unit Complement</b>	1 x 6" (152 mm) HDT C-CAM Bass-Mid Drivers 1 x MPD III Tweeter	1 x 8" (203 mm) HDT C-CAM Bass Drivers 1 x 3" (76 mm) HDT C-CAM Mid-Range Driver 1 x MPD III Tweeter	2 x 6" (152 mm) HDT C-CAM Bass Drivers 1 x 3" (76 mm) HDT C-CAM Mid-Range Driver 1 x MPD III Tweeter
<b>Frequency Response Free-Field (-6dB)</b>	55 Hz - 60 kHz	49 Hz - 60 kHz	45 Hz - 60 kHz
<b>Frequency Response, In-Room (-6dB)</b>	44 Hz - 60 kHz	32 Hz - 60 kHz	28 Hz - 60 kHz
<b>Maximum Peak SPL (AES75, Z-weighted)</b>	114 dB	119 dB	117 dB
<b>Bass Alignment</b>	HiVe II Ported	HiVe II Ported	HiVe II Ported
<b>Port Tuning Frequency</b>	50 Hz	38 Hz	35 Hz
<b>Crossover Frequency</b>	LF/HF: 2.5 kHz	LF/MF: 700 Hz MF/HF: 2.6 kHz	LF/MF: 800 Hz MF/HF: 2.7 kHz
<b>External Dimensions with all accessories fitted(H x W x D)</b>	320 x 185 x 303 mm (12 5/8 x 7 5/16 x 11 15/16")	447.7 x 230 x 357.3 mm (17 15/8 x 9 1/16 x 14 1/16")	1098 x 339 x 463 mm (43 1/4 x 13 3/8 x 18 1/4")
<b>Weight (each)</b>	8.5 kg (18 lb 12 oz)	14 kg (30 lb 14 oz)	21.2 kg (46 lb 12 oz)



Model	Gold 500 6G	Gold On-Wall 6G	Gold C250 6G
<b>System Format</b>	3-Way	2-Way	3-Way
<b>Sensitivity (2.83v @ 1m, Free-Field)</b>	88.5 dB	N/A	87.5 dB
<b>Sensitivity (2.83v @ 1m, Installed)</b>	N/A	88 dB	N/A
<b>Recommended Amplifier Power (RMS into 4 Ohm, Music Signal)</b>	130 - 600 W	130 - 300 W	130 - 500 W
<b>Continuous Power Handling (CTA 426-B)</b>	300 W	150 W	250 W
<b>Nominal Impedance</b>	4 Ohms	4 Ohms	4 Ohms
<b>Minimum Impedance (20Hz to 20kHz)</b>	4.0 Ohms @ 150 Hz	5.3 Ohms @ 200 Hz	3.9 Ohms @ 165 Hz
<b>Drive Unit Complement</b>	2 x 8" (203 mm) HDT C-CAM Bass Drivers 1 x 3" (76 mm) HDT C-CAM Mid-Range Driver 1 x MPD III Tweeter	1 x 6" (152 mm) HDT C-CAM Bass-Mid Drivers 1 x MPD III Tweeter	2 x 6" (152 mm) HDT C-CAM Bass Drivers 1 x 3" (76 mm) HDT C-CAM Mid-Range Driver 1 x MPD III Tweeter
<b>Frequency Response Free-Field (-6dB)</b>	44 Hz - 60 kHz	N/A	64 Hz - 60 kHz
<b>Frequency Response, In-Room (-6dB)</b>	25 Hz - 60 kHz	38 Hz - 60 kHz	54 Hz - 60 kHz
<b>Maximum Peak SPL (AES75, Z-weighted)</b>	122 dB	115 dB	121 dB
<b>Bass Alignment</b>	HiVe II Ported	Ported	Sealed
<b>Port Tuning Frequency</b>	33 Hz	44 Hz	N/A
<b>Crossover Frequency</b>	LF/MF: 700 Hz MF/HF: 2.6 kHz	LF/HF: 2.5 kHz	LF/MF: 800 Hz MF/HF: 2.7 kHz
<b>External Dimensions with all accessories fitted(H x W x D)</b>	1155 x 383 x 475 mm (45 1/2 x 15 1/16 x 18 11/16")	465 x 300 x 124.2 mm (18 5/16 x 11 13/16 x 4 7/8")	205 x 537 x 335 mm (8 1/16 x 21 1/8 x 13 3/16")
<b>Weight (each)</b>	26.5 kg (58 lb 7 oz)	9 kg (19 lb 14 oz)	15.3 kg (33 lb 12 oz)

## Available Finishes



Satin White



High-Gloss Black



Macassar

Learn more about Gold Series 6G at [monitoraudio.com/gold](https://monitoraudio.com/gold)





Listen Again.

Monitor Audio  
24 Brook Road  
Rayleigh, Essex  
SS6 7XJ  
England  
Tel: +44 (0)1268 740580  
Email: [info@monitoraudio.group](mailto:info@monitoraudio.group)

[monitoraudio.com](https://www.monitoraudio.com)